



# MONTHLY MEMBERSHIP PROGRESS REPORT

District 22 W

Results as of: 06/30/2019

GMT: MAHESH CHITNIS

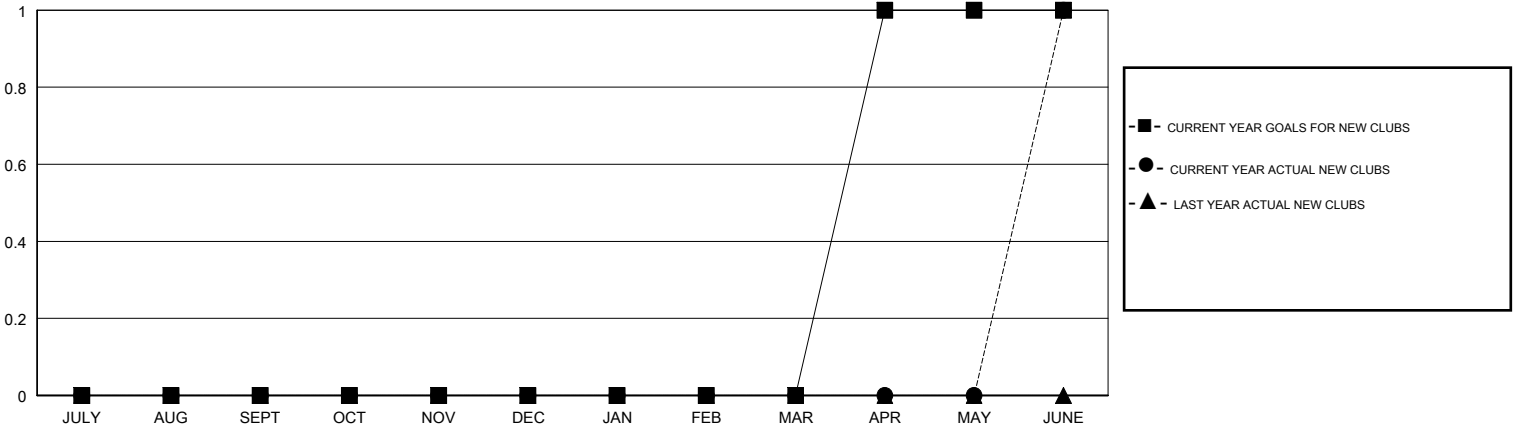
LOCATION MARYLAND

GMT CA

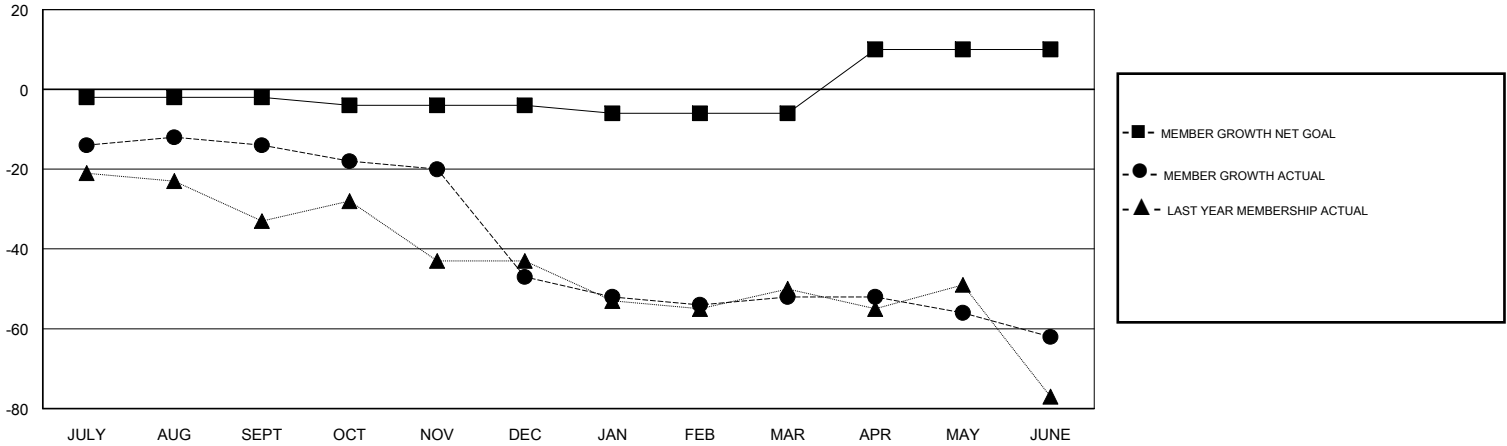
Clubs			
RESULTS FOR 2018-2019			
QUARTER	NEW CLUB GOAL	NEW CLUBS	DROPPED CLUBS
JULY/AUG/SEPT	0	0	1
OCT/NOV/DEC	0	0	0
JAN/FEB/MAR	0	0	0
APR/MAY/JUNE	1	1	0

Members			
RESULTS FOR 2018-2019			
QUARTER	MEMBER GROWTH NET GOAL	MEMBER GROWTH ACTUAL	DROPPED MEMBERS ACTUAL (including transfers)
JULY/AUG/SEPT	-2	40	48
OCT/NOV/DEC	-2	29	54
JAN/FEB/MAR	-2	31	34
APR/MAY/JUNE	16	64	66

GOALS AND ACTUAL NEW CLUBS CUMULATIVE



GOALS AND ACTUAL MEMBERS CUMULATIVE



DROPPED CLUBS: 1
------------------

38 CLUBS OF 59 ADDED 1 OR MORE NEW MEMBERS

GENDER DISTRIBUTION	
MALE	1,198 (64.48%)
FEMALE	660 (35.52%)
Women Percentage Fiscal Year Goal: 38%	

DROPPED MEMBERS	
DECEASED	39
CLUB CANCELLED	0
OTHER	163
<b>TOTAL</b>	<b>202</b>

[CLICK HERE FOR CUMULATIVE MEMBERSHIP DATA](#)

TOTAL FAMILY UNIT MEMBERS	501
FAMILY MEMBERS PAYING HALF DUES	261